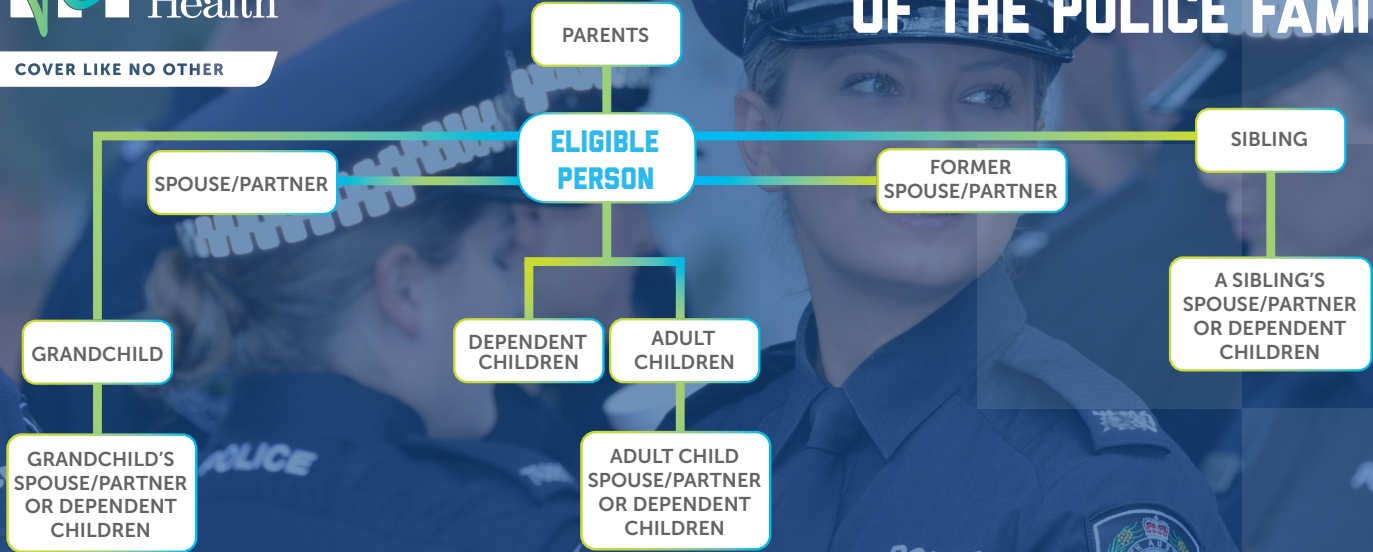


NOW COVERING MORE OF THE POLICE FAMILY



Police Health is restricted access private health insurance for:

1. Currently or previously employed Australian police officers and police employees/volunteers of state, territory or federal police departments, police unions and associations.
2. **Recently Updated!** Retired and former police officers, and employees/volunteers of police departments, unions and associations in Australia.
3. Eligibility also extends to close relations of the above, such as;
 - Dependent Child
 - Adult Child
 - Adult Child's Partner/Spouse
 - Adult Child's Dependent Child
 - Partner/Spouse
 - Former Partner/Spouse
 - **New!** Parent
 - **New!** Sibling
 - **New!** Sibling's Partner/Spouse
 - **New!** Sibling's Dependent Child
 - **New!** Grandchild
 - **New!** Grandchild's Partner
 - **New!** Grandchild's Dependent Child

Eligible Departments

- SAPOL: South Australian Police
- NTPFES: Northern Territory Police Services
- QPS: Queensland Police Service
- WAPOL: Western Australian Police
- TASPOL: Tasmanian Police
- VICPOL: Victorian Police
- NSWPOL: New South Wales Police
- AFP: Australian Federal Police

Eligible Unions and Associations

- PASA: Police Association of South Australia
- NTPA: Northern Territory Police Association
- QPU: Queensland Police Union
- QPCOUE: Queensland Police Commissioned Officers Union
- WAPU: Western Australian Police Union
- PAT: Police Association of Tasmania
- TPAV: The Police Association of Victoria
- PANSW: Police Association of New South Wales
- AFPA: The Australian Federal Police Association
- PFA: The Police Federation of Australia

If you are uncertain about your eligibility get in touch with our friendly team by calling **1800 603 603** or emailing joinus@policehealth.com.au.

We're here to help.

